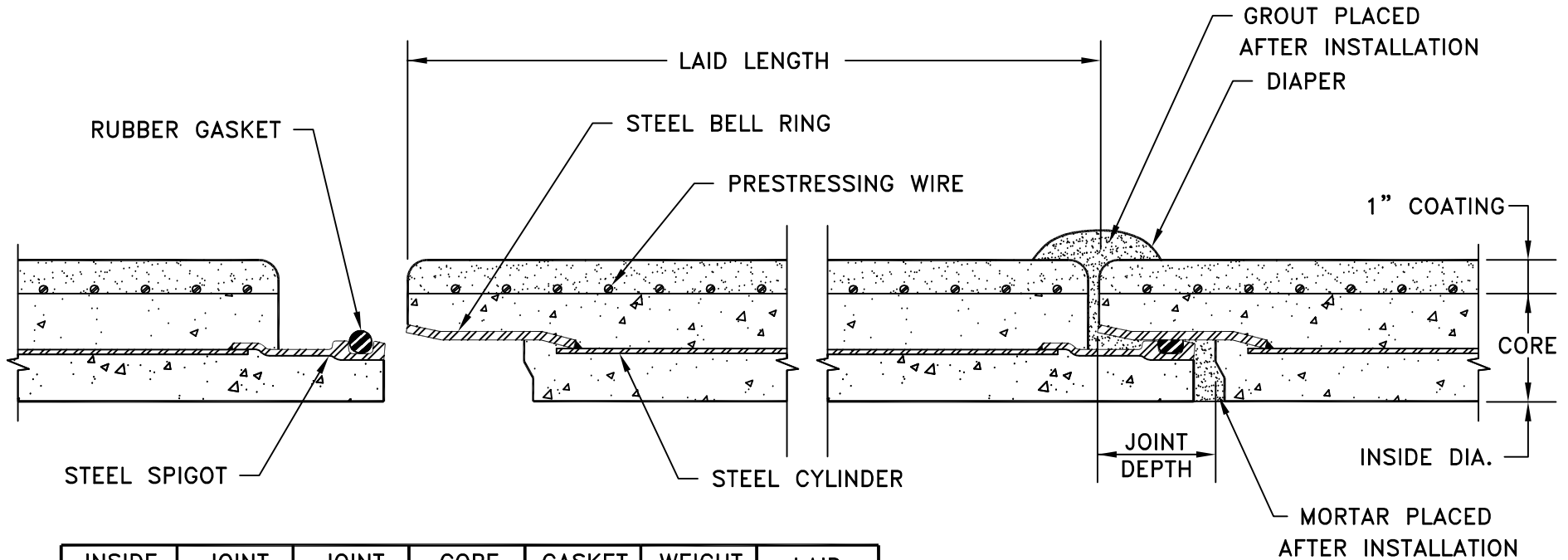


V-12 IS AVAILABLE IN SIZES UP TO 144" I.D.
 FOR INFORMATION ON LARGER SIZES CONTACT A
 REPRESENTATIVE FROM VIANINI PIPE, INC.



INSIDE DIA. IN.	JOINT DIA. IN.	JOINT DEPTH IN.	CORE "T" IN.	GASKET DIA. IN.	WEIGHT PER FOOT	LAI D LENGTH FT.
48	54	4-1/8	5	21/32	1090	20.03
54	57-3/4	4-1/8	4	25/32	1010	20.03
60	63-7/8	4-1/4	4-1/2	25/32	1225	20.03
66	70-1/8	4-3/8	5	25/32	1465	20.03
72	76-3/8	4-1/2	5-1/2	25/32	1725	20.03
78	82-1/2	4-5/8	6	25/32	2005	20.04
84	88-3/4	4-7/8	6-1/2	25/32	2315	20.04
90	94-7/8	4-7/8	5-5/8	25/32	2180	20.04
96	101-1/8	5-1/8	6	25/32	2450	20.04
102	106-7/8	5-1/8	6-3/8	25/32	2750	20.04

NOTES:

- 1) DESIGN IN ACCORDANCE WITH SPECIFICATION AWWA C304.
- 2) MANUFACTURE IN ACCORDANCE WITH SPECIFICATION AWWA C301.
- 3) SPECIAL DESIGNS FURNISHED UPON REQUEST.

VIANINI PIPE, INC.

TITLE: PRESTRESSED CONCRETE EMBEDDED CYLINDER PIPE WITH RUBBER & STEEL JOINTS 48" THRU 102" V-12